



RM-2200-SR

2U shallow depth industrial rack-mount server with support for Dual 5th/4th Gen Intel Xeon Scalable CPUs (up to 72 cores)

Overview

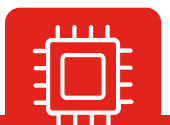
The RM-2200-SR is possibly the shallowest 2U server available that supports Xeon CPUs, redundant power, and full length, dual slot graphics cards.

With support for 5th / 4th Gen Intel Xeon Scalable processors (**up to 72 cores**), 4096GB RAM (**256GB x 16**), optional 10 Gigabit Ethernet and PCIe gen 5, the RM-2200-SR packs massive performance into a compact and customisable enclosure.

By using industrial components throughout, the RM-2200-SR is designed to operate 24/7 in harsh environments and mission-critical applications.

Key Features

- Up to 72 Xeon Scalable cores (**Dual CPU**).
- Redundant and 24VDC PSU options.
- 6 x low profile or 2 x full height expansion slots.
- Dual slot graphics card support.
- Only 400mm deep.
- 5+ year availability.
- Branding and customisation options.



Specifications

CPU	5th Gen Intel® Xeon® Scalable Processors* 4th Gen Intel® Xeon® Scalable Processors* 270W Max TDP supported*.
Chipset	Intel® C741.
Memory	Up to 4096GB ECC DDR5 supported.
Storage	2 x 2.5" SATA SSD/HDD drive bays (RAID 0/1 support). 1 x M.2 (Key B+M, 2280) with SATA3 and PCIe for SSD. Optional 2 x removable 2.5" drives.
I/O Rear	1 x Serial Port. 2 x USB 3.2 (Gen 1). 1 x VGA . 2 x RJ45 (GbE Intel i210AT). 2 x Optional RJ45 (10GbE Intel X710-AT2). 1 x RJ45 dedicated for IPMI.
I/O Front	2 x USB 2.0.
Expansion	2 x Full height or 6 x low profile slots. Full height slots*: 2 x PCI Express x16 (1 x single width and 1 x dual width). Low profile slots*: 4 x PCI Express x16. 2 x PCI Express x8. *To be defined at quotation stage Mini slots: 1 x M.2 2280 B+M key (SATA and PCIe).

Other Features	Optional TPM 2.0. Watchdog timer. IPMI (Shared with LAN 2).
Power	Standard Single PSU: 700W / full range AC input. Optional Dual redundant PSU: 700W / full range AC input. Optional 24VDC input PSU: Up to 750W / 18 to 36VDC input.
Temperature	-5°C to 40°C. Wide temperature options by request.
Dimensions	400mm x 88.1mm x 427mm (479mm inc. rack-mount ears). Compatible with Accuride DZ2907 telescopic slides.
OS Support	Windows 10 / 11. Windows Server 2019. Linux.
Certification	CE / UKCA.



DATASHEET_COMPUTING_RM-2200-SR_V02.pdf

Technical specifications are subject to change without notice. E & OE Issue A.



Please note:

By default these systems will be branded with the Steatite logo, if you require an unbranded version of the system then please contact us.

